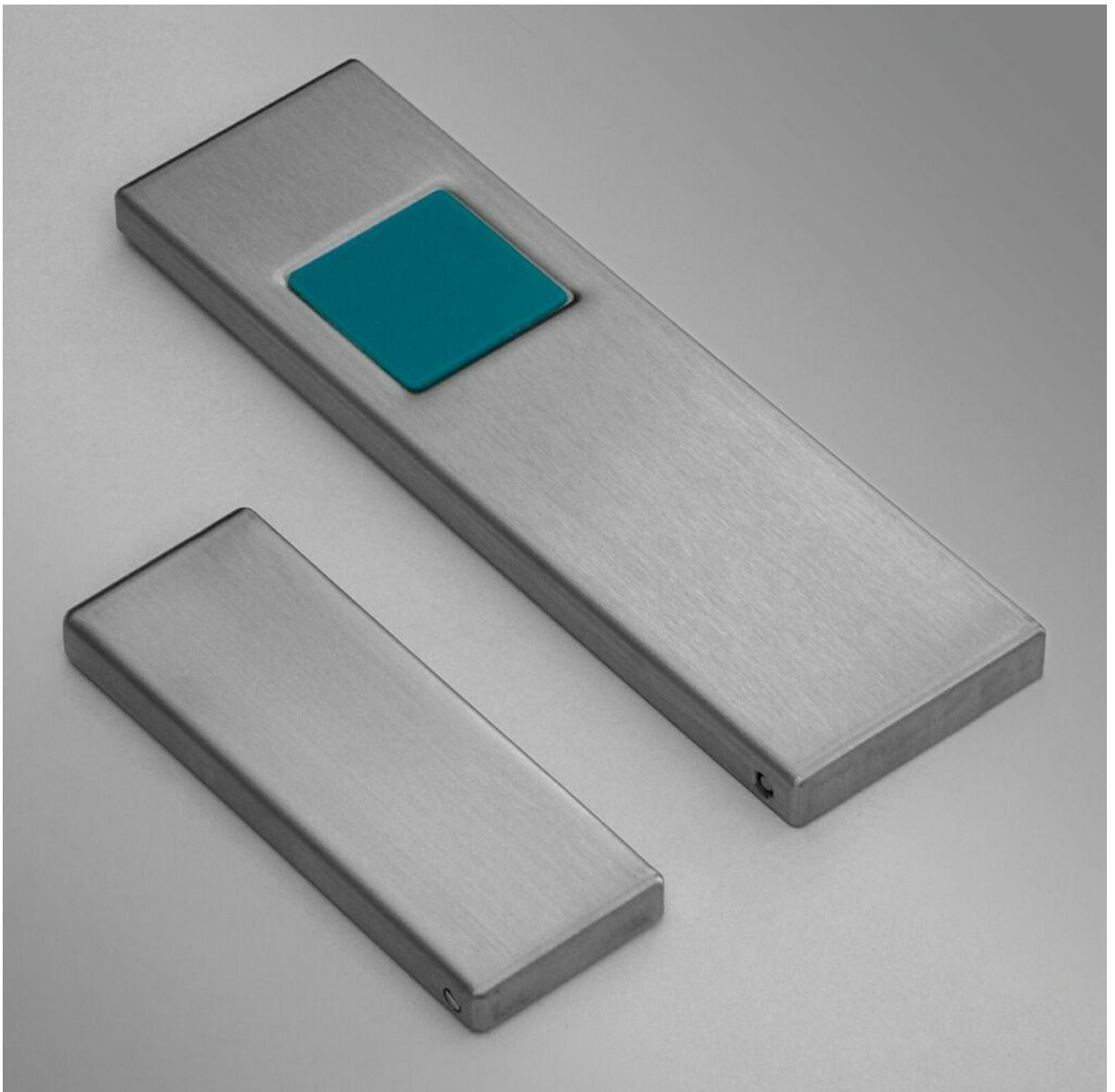


INDESTRUCTIBLE



XTRASWITCH

Stainless steel Hit & Kick switch

The Hit & Kick switch is a strong but elegant switch made to last.

Specially designed for operation by foot, elbow or trolley it ensures a fast and safe way to open doors

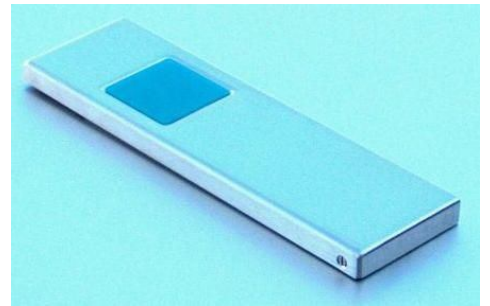
Most push buttons stop functioning after a while under harsh conditions. This will not happen with the Xtraswitch Hit & Kick switch which will even survive a full hit with a trolley.

Why choose for the Hit & Kick switch

- Easy to operate
- Strong stainless steel 304 housing
- Modern/timeless design
- Installation possible from right and left side
- No mounting box required
- Suitable for in- and outdoor use
- Resistant against dust, water, gasoline, oil and cleaning products
- Maintenance free

Technical details

- Size: HK1 250 x 75 x 15 mm
HK2 155 x 55 x 15 mm
- Top plate 1,5 mm thick, polished stainless steel
- Base plate 2,0 mm thick stainless steel
- Snap action, change over-contact with single break NO/NC
- Max switching power: 1 A - 230 VAC
- Connection wire: 500 mm
- Protection class IP 65
- Operating temperatures from -15°C to +80°C
- Mechanical life: 3 million operations
- 2 years warranty on micro switch
- 5 Years warranty on housing



48 x 48 mm signs HK1



HK101



HK102



HK103



HK104



HK105



HK106

XTRASWITCH

Xtra b.v.
Bijsters 2
5131NW Alphen
The Netherlands

Tel: +31(0)135083411
Fax: +31(0)135083410
Email: info@xtraswitch.com
Web: www.xtraswitch.com